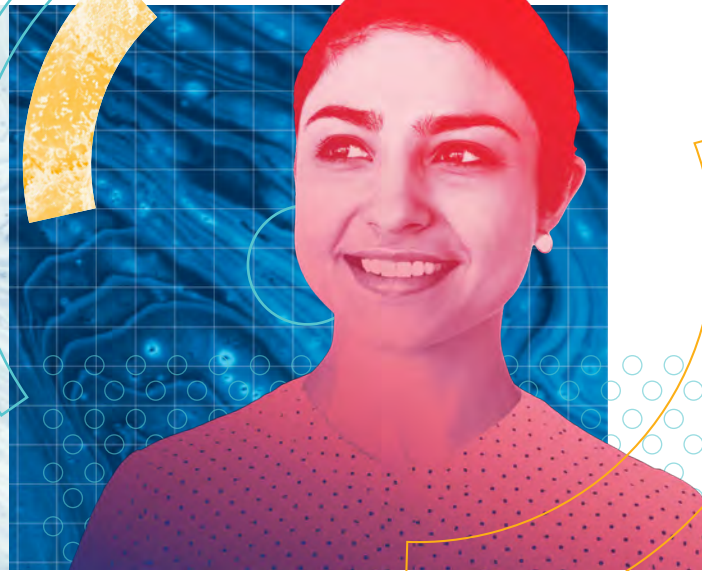




# SCHOOL PSYCHOLOGY



## Help a Child. Change the Future.


### PROGRAM OVERVIEW

A child's learning ability is greatly impacted by positive mental health. That is why school psychology is so important: It has a direct effect on the education and abilities of every child. PCOM's School Psychology programs prepare graduates to understand and enhance the development of children through a dual-knowledge base of education and psychology.

Our whole-person approach prepares graduates with additional skills, making them uniquely capable and committed to providing high-quality, effective, ethical and professional school psychological services in a variety of educational and mental health settings.

Our Educational Specialist in School Psychology (EdS) program is an applied professional psychology program designed for students with a master's degree in school psychology or a related field. Our Doctor of Psychology in School Psychology (PsyD) program prepares school psychologists, with a focus on cognitive behavioral therapy, applied behavioral analysis and neuropsychological assessment in schools.

**OUR PROGRAMS  
PREPARE GRADUATES  
TO COLLABORATE AND  
FORM PARTNERSHIPS  
WITH FAMILIES,  
EDUCATORS,  
HEALTHCARE  
PROVIDERS AND THE  
COMMUNITY AT LARGE.**

 Diversity, equity and inclusion remain at the forefront of our mission. PCOM actively nurtures an environment of curiosity and respect, promoting the discovery and celebration of our differences.



# HIGHLY EXPERIENTIAL LEARNING PROVIDES STUDENTS WITH THE REAL-WORLD KNOWLEDGE AND SKILLS THEY NEED TO IMMEDIATELY MAKE AN IMPACT IN A SCHOOL SETTING ONCE THEY GRADUATE.

- RENOWNED FACULTY MEMBERS MENTOR STUDENTS AND PROVIDE A COLLABORATIVE LEARNING ENVIRONMENT.
- STANDARDIZED PATIENT ACTORS IMMERSE STUDENTS IN REALISTIC EXPERIENCES AND CLINICAL SITUATIONS.
- THE THREE-YEAR EDS PROGRAM IS FULLY ACCREDITED BY THE NATIONAL ASSOCIATION OF SCHOOL PSYCHOLOGISTS (NASP).

## PROGRAM CERTIFICATION

The need for school psychologists has never been greater. We empower our students with the skills and preparation to enter a variety of fields within educational and healthcare settings.

The **THREE-YEAR EDS DEGREE** is an innovative applied professional psychology program, with two years of coursework and a one-year internship. EdS graduates are eligible for the National Certified School Psychologist credential, and leave PCOM as behavioral specialists who can apply for jobs within the school system at the specialist level.

The **PsyD IN SCHOOL PSYCHOLOGY** program is designed to be completed in five years. Students will complete four years of coursework and a series of field experiences, as well as a one-year doctoral-level internship. We prepare our graduates to assume the role of an entry-level school psychologist, with specialized training in assessment practices and application of cognitive behavior therapy.

## LOCATION

Our main campus is located on the outskirts of Philadelphia and features video-equipped amphitheaters, research and anatomy labs, a digital library, computer labs and more.



To find out more about our admissions requirements or to apply, please visit [pcom.edu/admissions](https://pcom.edu/admissions).

PCOM 4170 City Avenue, Philadelphia, PA 19131 • 215-871-6700 • [admissions@pcom.edu](mailto:admissions@pcom.edu)